

# Model : SP-5 DP Rev. B

Components List (Double Pulse Multi Process Welder)

# PRO SPOT

ORDER ONLINE @ [shop.prospot.com](http://shop.prospot.com)



### SHIPPING DATA:

**Box 1**  
Dimensions: 39"x15.5"x29"  
Weight: 168lbs. (76 Kg.)

**Box 2**  
Dimensions: 21"x12"x7.5"  
Weight: 25lbs. (11 Kg.)

SP-5 DP Serial #

Checked By/Date:



Instruction Manual

### Cart Parts

90-0579 : Tow Handle



1 ea.

### Box 2 Contents

51-7002 : Rear Wheel-9" Dia.



2 ea.

51-7001 : Swivel Caster



2 ea.

90-0555 : Bottle Bracket



1 ea.

90-0622 : Boom Tube Base



1 ea.

90-0602 : Base w/  
90-0624 : Plastic Shroud



1 ea.

90-0604 : Axle



1 ea.

90-0554 : Trolley, Bottles



1 ea.

51-0031: Boom Hardware Kit



1 ea.

### Box 1 Contents

#### Torches and Cables

82-7015 : Silicon Bronze Torch Red (9 ft.)



1 ea.

82-7016 : Steel Torch Green (9 ft.)



1 ea.

82-7025 : Aluminum Torch Blue (9 ft.)



1 ea.

82-7021 : Ground Cable (13 ft.)

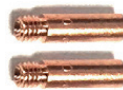


1 ea.

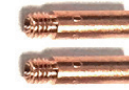
#### Hardware and Spare Tips (Included)

Consumable Kit : SA-0506

50-7006 : CONTACT TIP, 0.6MM / 0.023"



50-7008 : CONTACT TIP, 0.8MM / 0.030"



50-7111 : CONTACT TIP, ALU, 1.0mm (0.040")



50-7112 : CONTACT TIP, ALU, 1.2mm (0.045")



S-88 : SCREW, SHCS, M6 x 20, Zinc



51-5419 : HOSE CLAMP, 7/32" - 5/8" RANGE



1 ea.

Adapter Kit : SA-0508

83-5081 : Gas Connector



83-4013 : 3 pin Male Connector



1 ea.

82-7001 : Gas Regulator



2 ea.

50-7037 : Silicon Bronze 1.0mm - 2kg



1 ea.

50-7208 : Mild Steel 0.8mm - 5kg



1 ea.

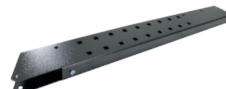
50-7117 : Aluminum 5554 1.2mm - 2kg



1 ea.

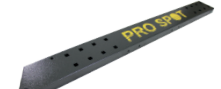
### Box 2 Contents

90-0615 : Vertical Hanger (Side 1)  
90-0616 : Vertical Hanger (Side 2)



1 ea.

90-0613 : Top Hanger (Side 1)  
90-0614 : Top Hanger (Side 2)



1 ea.

# Model : SP-5 DP

## Components List (Double Pulse Multi Process Welder)

# PRO SPOT

ORDER ONLINE @ [shop.prospot.com](http://shop.prospot.com)

### Box 2 Continued...

90-0612 :  
Hanger Tube



1 ea.

90-0617 :  
Hood Hanger



2 ea.

90-0618 & 90-0619 : Torch Saddle Hooks



1 ea.

90-0241 : Parts Bin Tray



2 ea.

90-0620 & 90-0621 : Cable Channels



1 ea.

M-88: 35" Chain



2 ea.

Base Hardware Kit



1 ea.

### Parts and Consumables

#### Steel & Silicon Bronze (Green & Orange) Torch

50-7002 : Blue Liner 0.6 - 0.9 mm



50-7011 : Nozzle for Plus 15 Torch



50-7207 : Wire Feed Roller - for Steel  
0.6 - 0.8 mm / 0.023 - 0.030 in

50-7209 : Wire Feed Roller - for Steel  
0.8 - 1.0 mm / 0.030 - 0.040 in



50-7015 : Torch Neck for Plus 15  
(Included 50-7152 : Gas Diffuser Spring)



50-7006 : Contact Tip 0.6 mm / 0.023 in

50-7008 : Contact Tip 0.8 mm / 0.030 in

50-7151 : Gas Diffuser for 1.4 Plus 15 Torch  
(Spring 50-7152 NOT Included)

50-7152 : Gas  
Diffuser Spring



#### Aluminum (Blue) Torch

50-7001 : Graphite Liner 1 - 1.2 mm



50-7114 : Nozzle for Plus 25 Torch



50-7109 : Wire Feed Roller - for Aluminum  
0.8 - 1.0 mm / 0.030 - 0.040 in

50-7118 : Wire Feed Roller - for Aluminum  
1.0 - 1.2 mm / 0.040 - 0.045 in



50-7025 : Torch Neck for Plus 25



50-7113 : Contact Tip for Aluminum Wire  
0.8 mm / 0.030 in

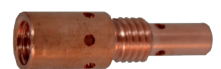
50-7111 : Contact Tip for Aluminum Wire  
1.0 mm / 0.040 in

50-7112 : Contact Tip for Aluminum Wire  
1.2 mm / 0.047 in



50-7251 : Gas Diffuser M8 for Plus 25 Torch

50-7024: Gas  
Diffuser Spring



# Model : SP-5 DP

## Components List (Double Pulse Multi Process Welder)

# PRO SPOT

ORDER ONLINE @ [shop.prospot.com](http://shop.prospot.com)

### Available Wire

50-7108 : Aluminum  
4043 0.8mm / 0.030 in - 2kg



50-7110 : Aluminum  
4043 1.0mm / 0.040 in - 2kg

50-7107 : Aluminum 5554  
1.0mm / 0.040 in - 2kg



50-7117 : Aluminum  
5554 1.2mm / 0.047 in - 2kg

50-7115 : Aluminum  
5356 1.0mm / 0.040 in - 2kg



50-7208 : Mild Steel  
0.8mm / 0.030 in - 5kg



50-7038 : Silicon Bronze  
0.8mm / 0.030 in - 2kg

50-7037 : Silicon Bronze  
0.8mm / 0.030 1.0mm - 2kg



### SP-5 DP Optional

82-7017 : TIG Torch (13 ft.)



1 ea.

82-7014 : Stick / MMA Cable (10 ft.)



1 ea.

### TIG Torch

50-7301 : Tungsten Electrode, TIG



50-7302 : TIG Collet 1.6mm



50-7303 : TIG Collet Body, 1.6mm



50-7304 : Ceramic Nozzle



50-7305 : Electrode Cap



### PS Protective Covers (optional)

80-9912 : Protective Cover  
Heavy duty, high quality material

